

RIVERSIDE SQUARE

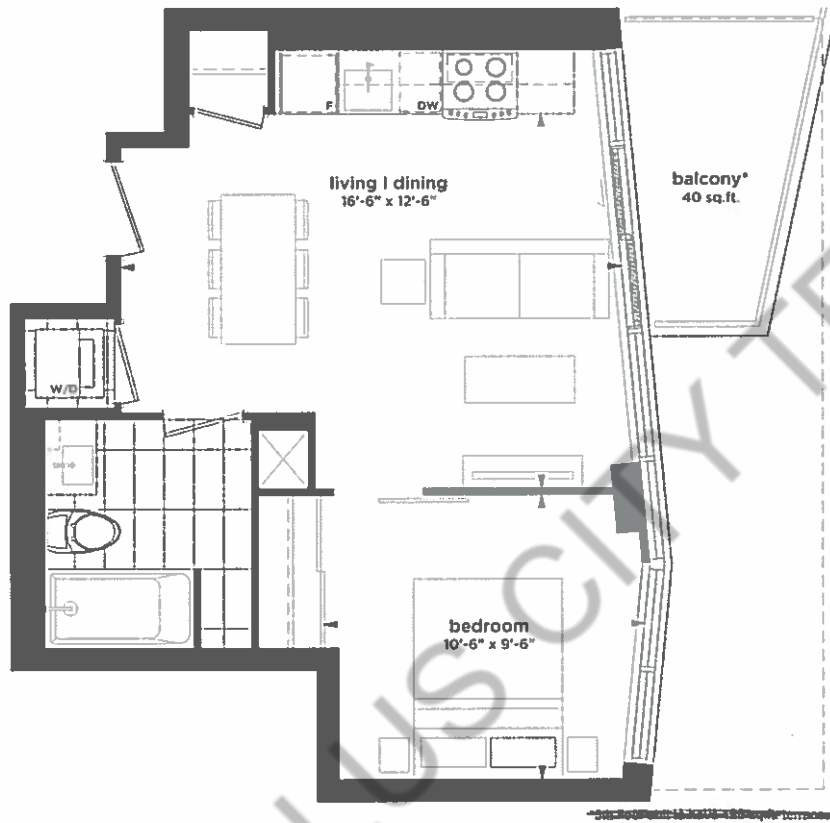
LOFTS ON QUEEN

THE CENTRAL COLLECTION

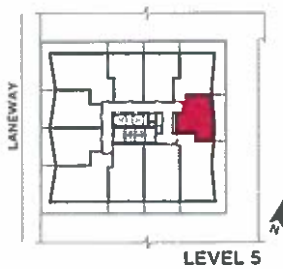
470 SQ.FT.

**ONE BEDROOM
BALCONY 40 SQ.FT.**

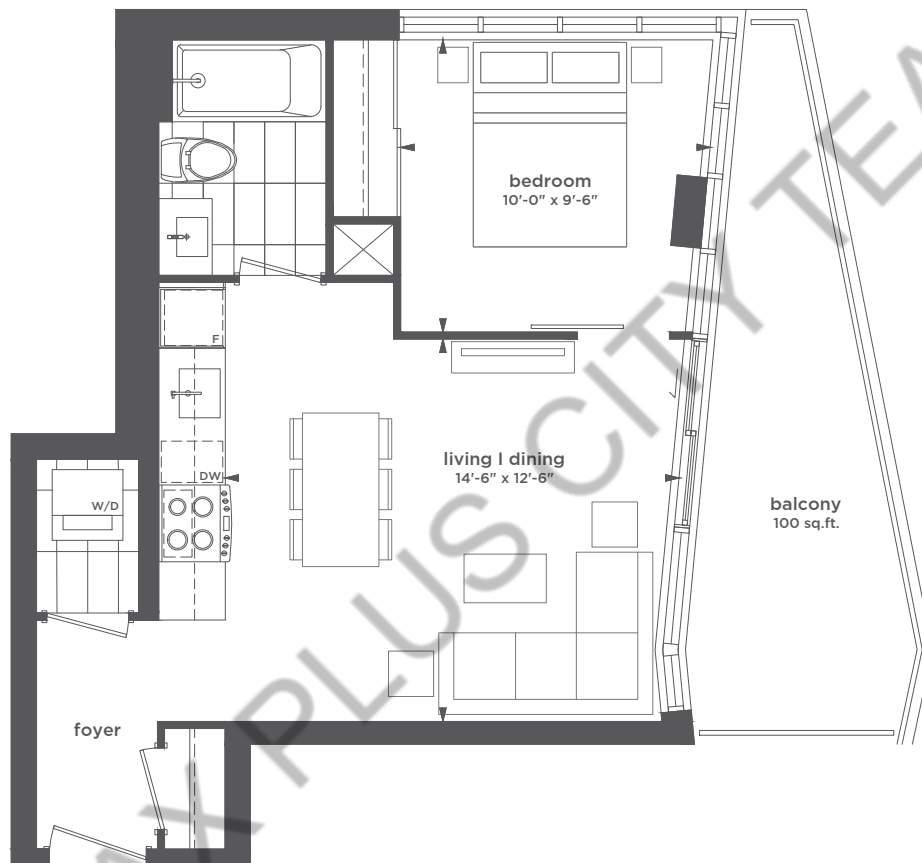
509 | 609 | 709 | 809 | 909 | 1009 | 1109 | 1209 | 1309



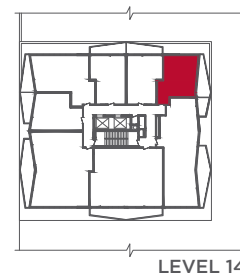
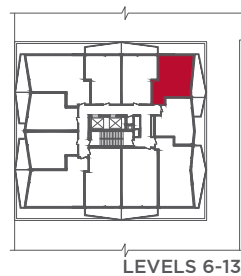
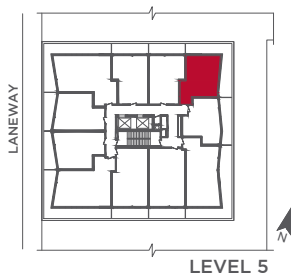
RE/MAX PLUS CITY TEAM



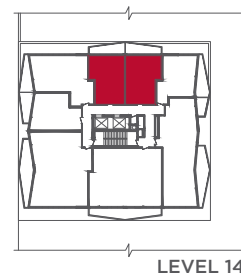
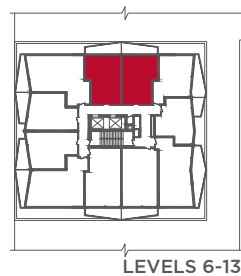
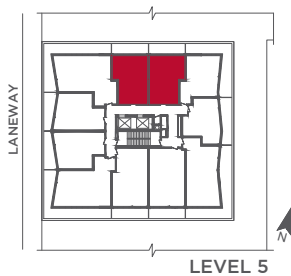
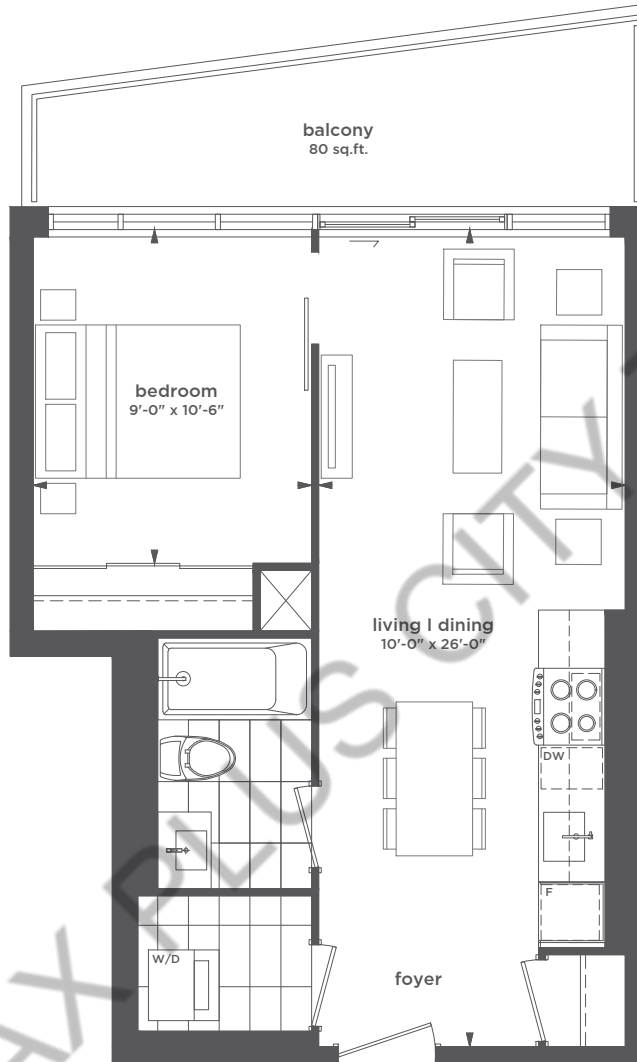
All sizes and specifications are subject to change without notice. E. & O. E.
 Note: Actual usable floor space may vary from the stated floor area.
 *Furniture not included.
 *Terrace condition may require an interior step.



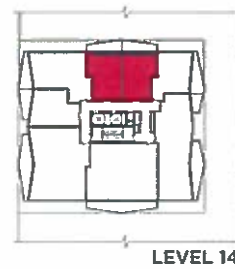
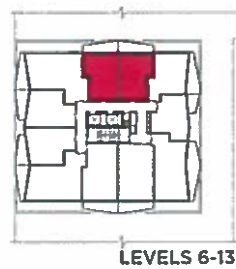
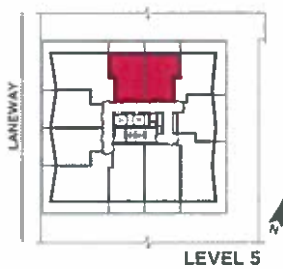
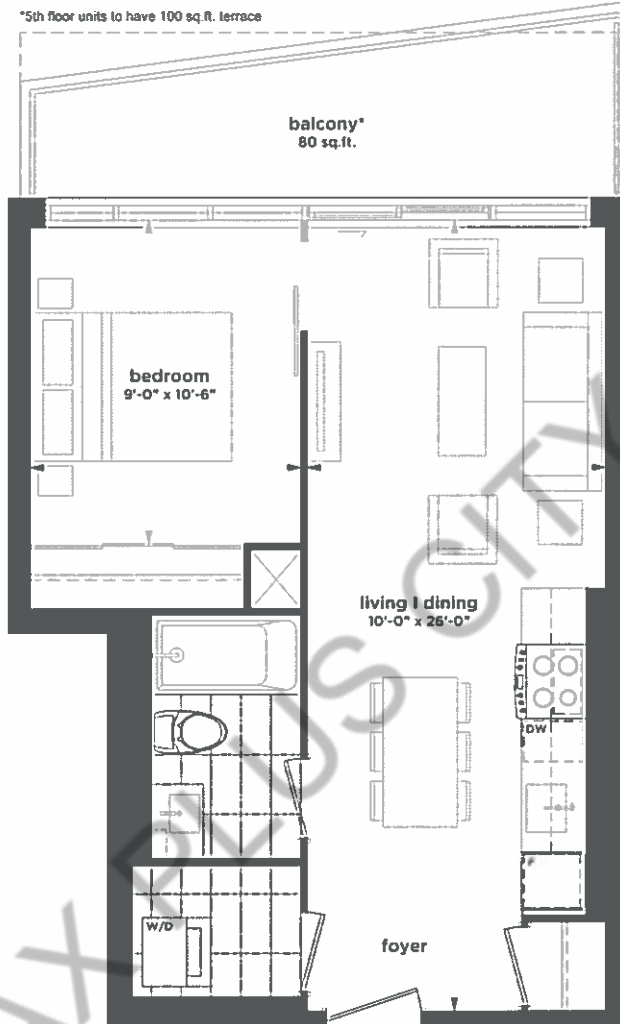
RE/MAX PLUS CITY TEAM



All sizes and specifications are subject to change without notice. E. & O. E.
 Note: Actual usable floor space may vary from the stated floor area.
 *Furniture and BBQ not included.
 *Terrace condition may require an interior step.



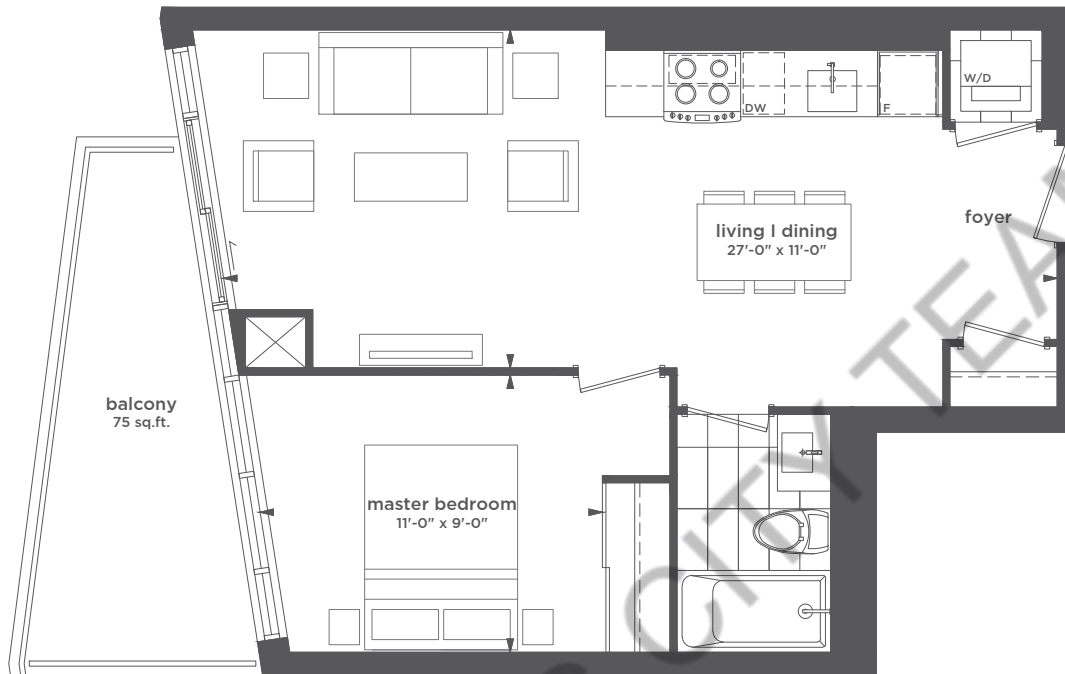
All sizes and specifications are subject to change without notice. E. & O. E.
 Note: Actual usable floor space may vary from the stated floor area.
 *Furniture and BBQ not included.
 *Terrace condition may require an interior step.



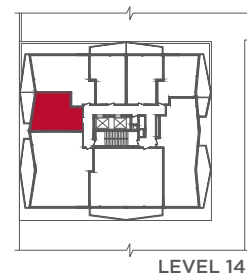
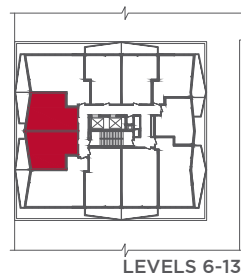
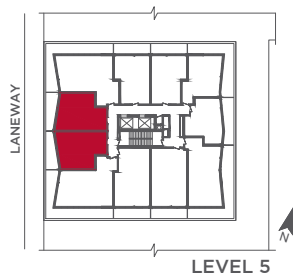
All sizes and specifications are subject to change without notice. E. & O. E.
 Note: Actual usable floor space may vary from the stated floor area.

*Furniture not included.

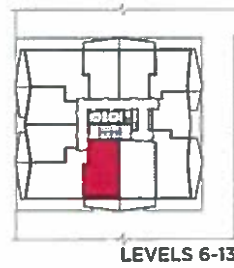
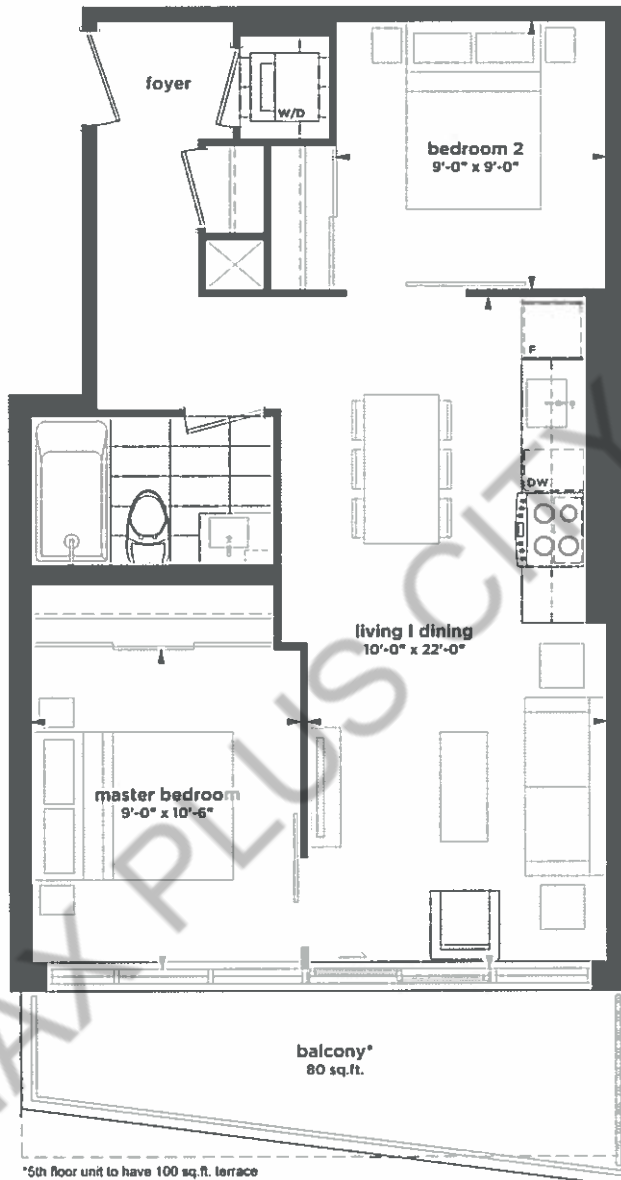
*Terrace condition may require an interior step.



RE/MAX PLUS CITY TEAM

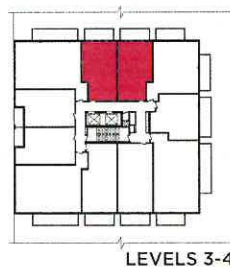
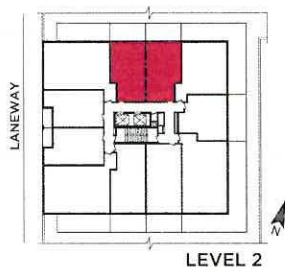
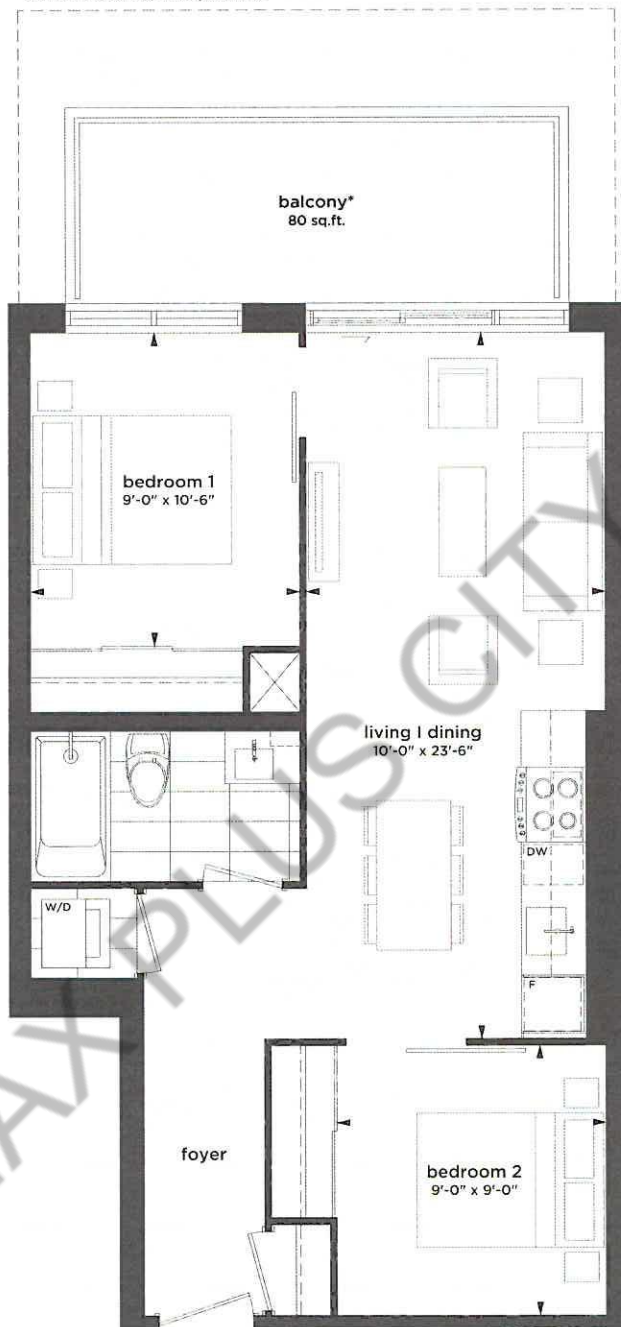


All sizes and specifications are subject to change without notice. E. & O. E.
 Note: Actual usable floor space may vary from the stated floor area.
 *Furniture and BBQ not included.
 *Terrace condition may require an interior step.



All sizes and specifications are subject to change without notice. E. & O. E.
 Note: Actual usable floor space may vary from the stated floor area.
 *Furniture not included.
 *Terrace condition may require an interior step.

*2nd floor units to have 150 sq.ft. terrace



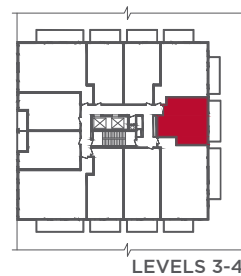
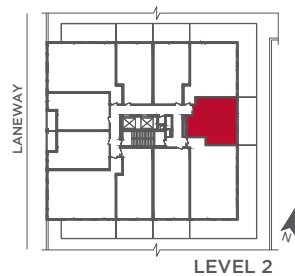
All sizes and specifications are subject to change without notice, E. & O. E.
 Note: Actual usable floor space may vary from the stated floor area.

*Furniture not included.

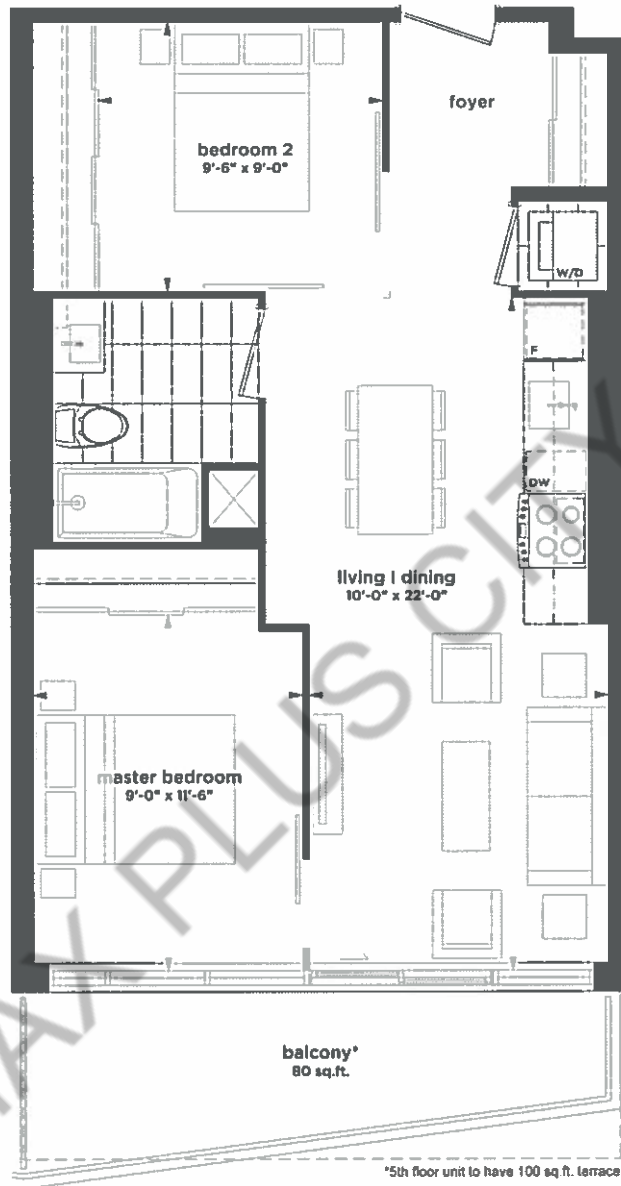
*Terrace condition may require an interior step.



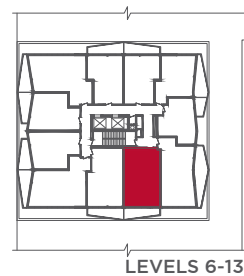
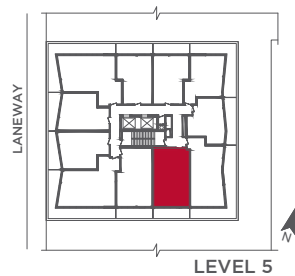
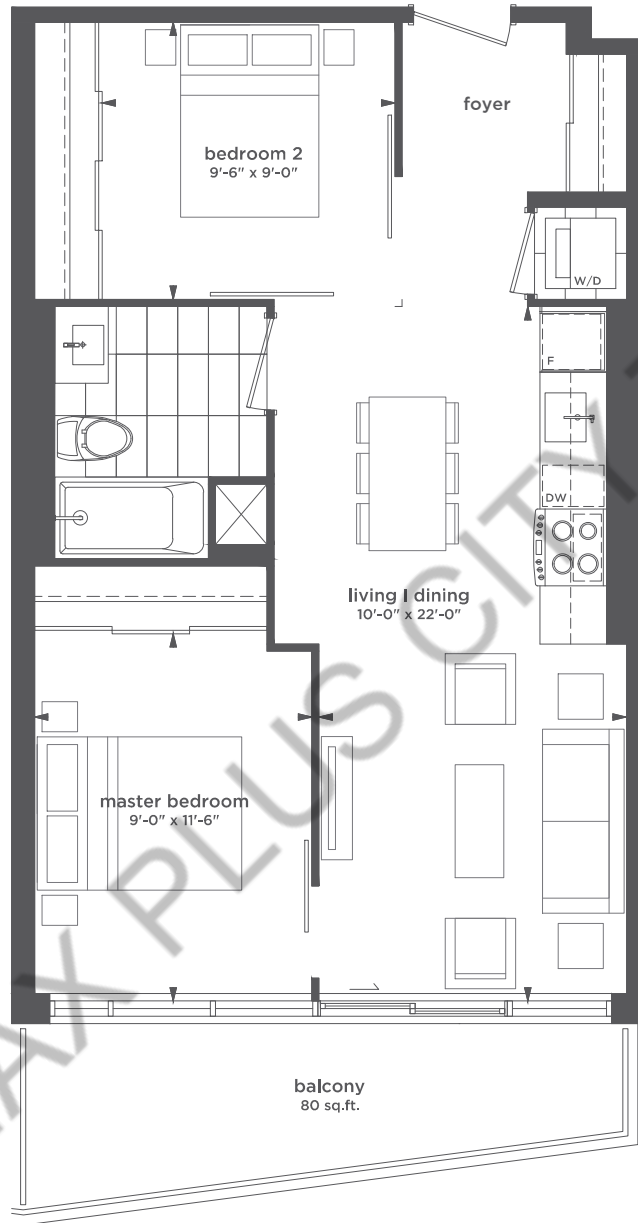
RE/MAX PLUS CITY TEAM



All sizes and specifications are subject to change without notice. E. & O. E.
 Note: Actual usable floor space may vary from the stated floor area.
 *Furniture and BBQ not included.
 *Terrace condition may require an interior step.

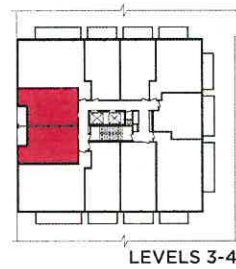
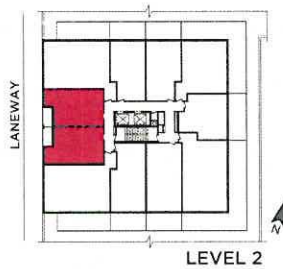
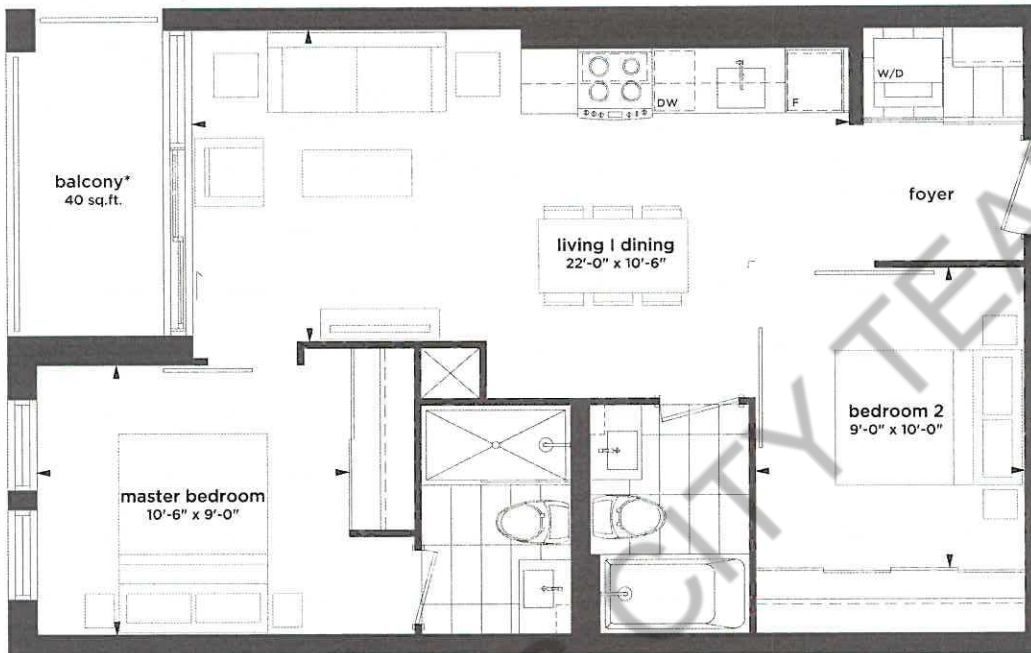


All sizes and specifications are subject to change without notice. E. & O. E.
 Note: Actual usable floor space may vary from the stated floor area.
 *Furniture not included.
 *Terrace condition may require an interior step.

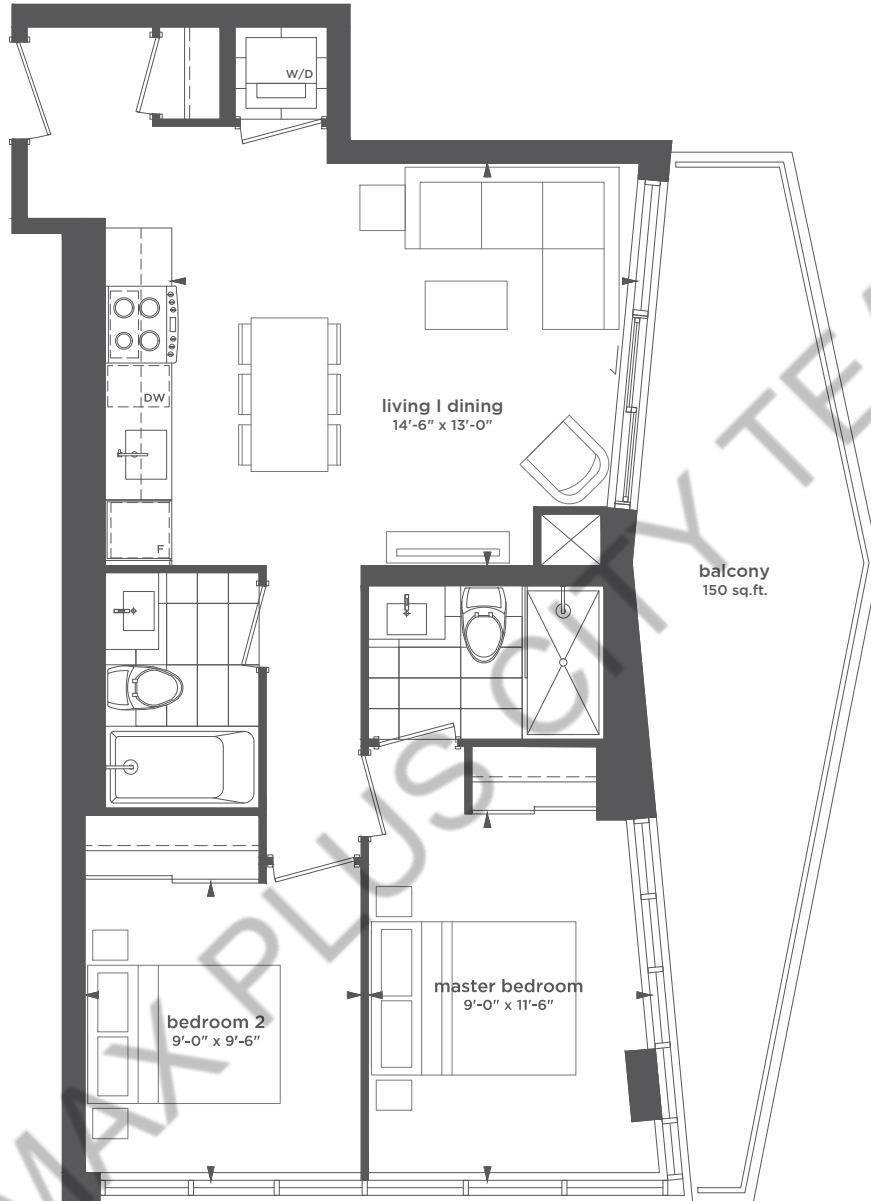


All sizes and specifications are subject to change without notice. E. & O. E.
 Note: Actual usable floor space may vary from the stated floor area.
 *Furniture and BBQ not included.
 *Terrace condition may require an interior step.

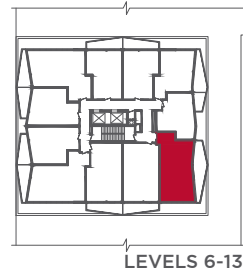
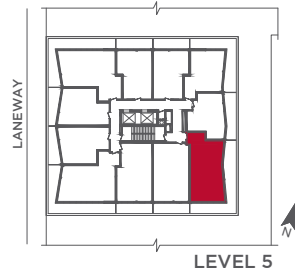
*2nd floor units to have 40 sq.ft. terrace



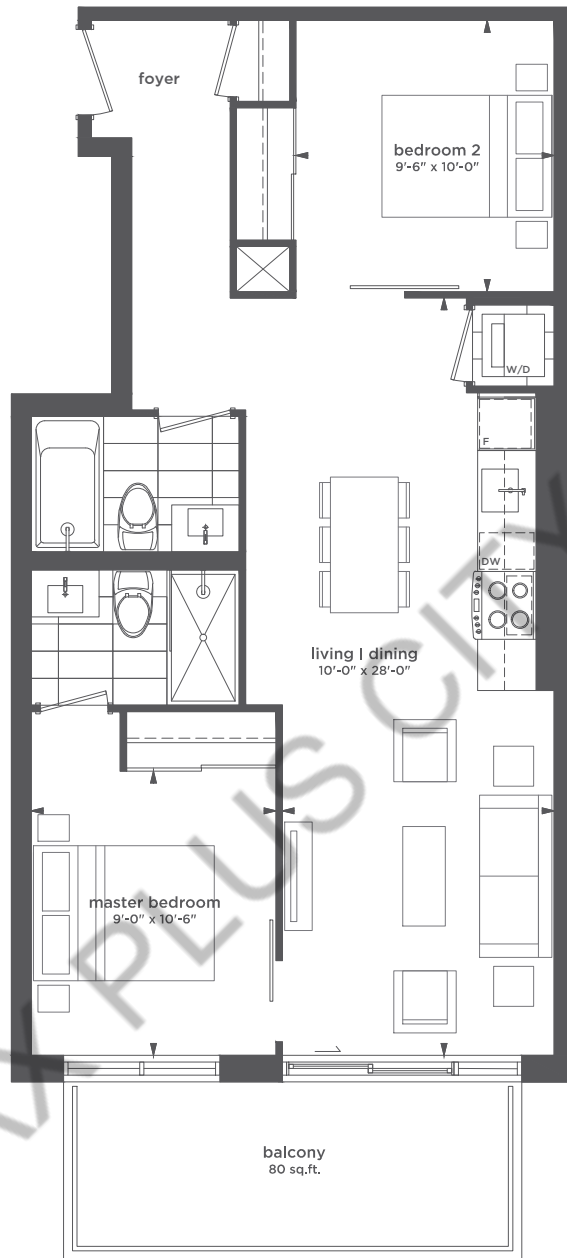
All sizes and specifications are subject to change without notice. E. & O. E.
 Note: Actual usable floor space may vary from the stated floor area.
 *Furniture not included.



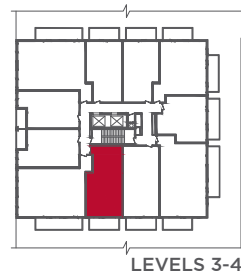
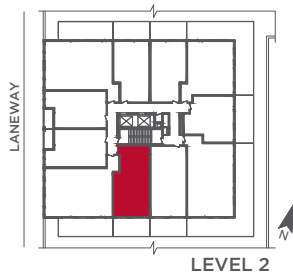
REMARKS PLUS QUALITY TEAM



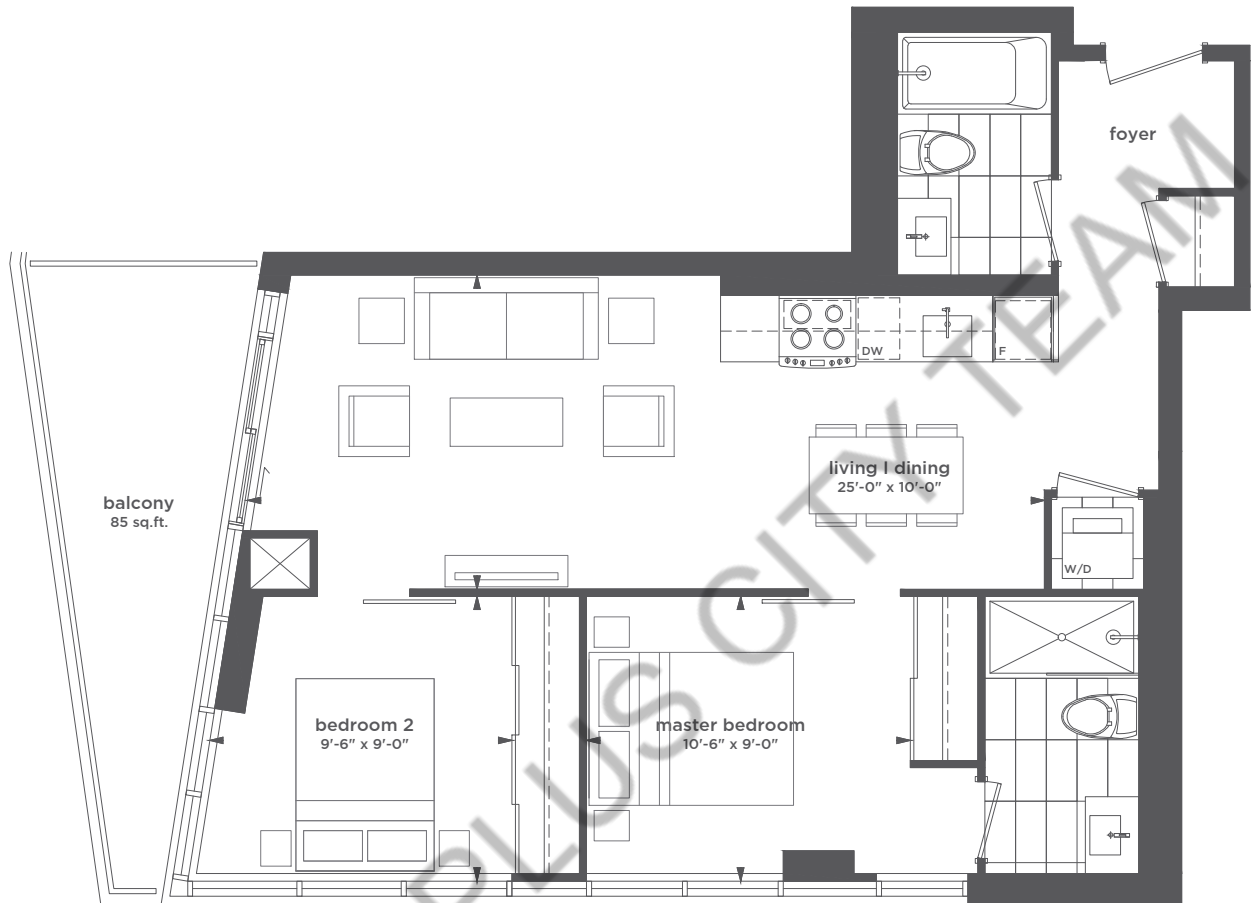
All sizes and specifications are subject to change without notice. E. & O. E.
 Note: Actual usable floor space may vary from the stated floor area.
 *Furniture and BBQ not included.
 *Terrace condition may require an interior step.



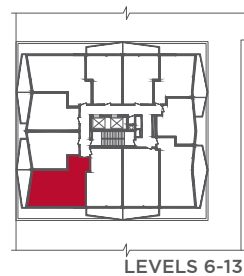
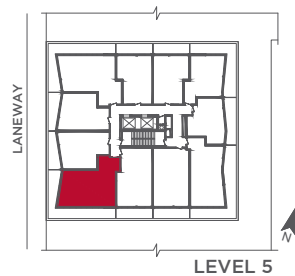
REMAIN PLUS CITY TEAM



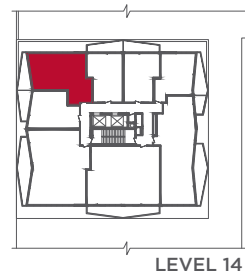
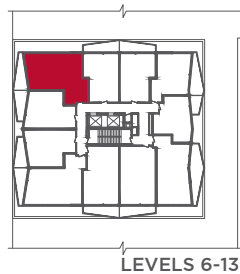
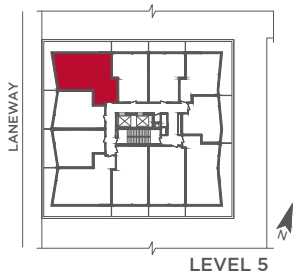
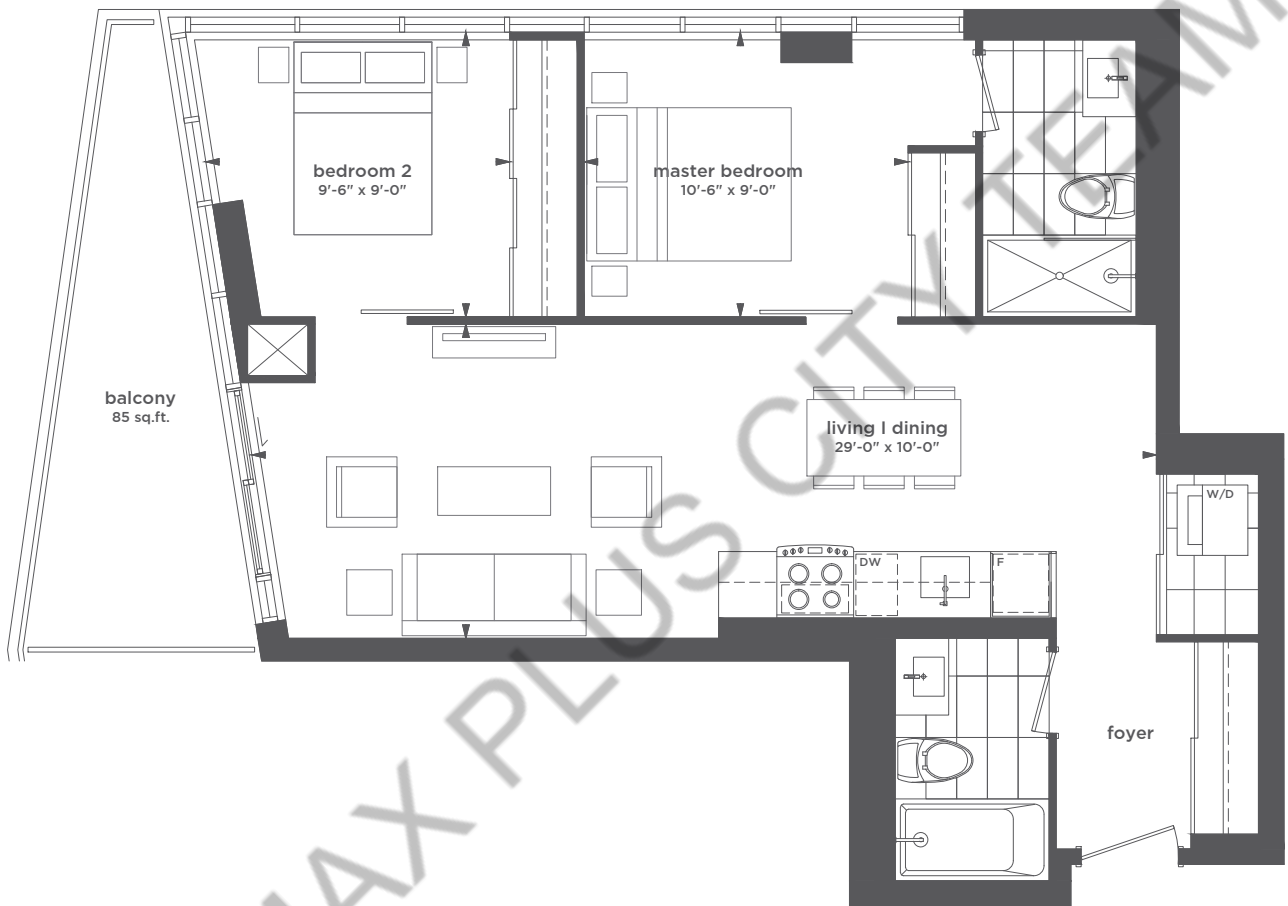
All sizes and specifications are subject to change without notice. E. & O. E.
 Note: Actual usable floor space may vary from the stated floor area.
 *Furniture and BBQ not included.
 *Terrace condition may require an interior step.



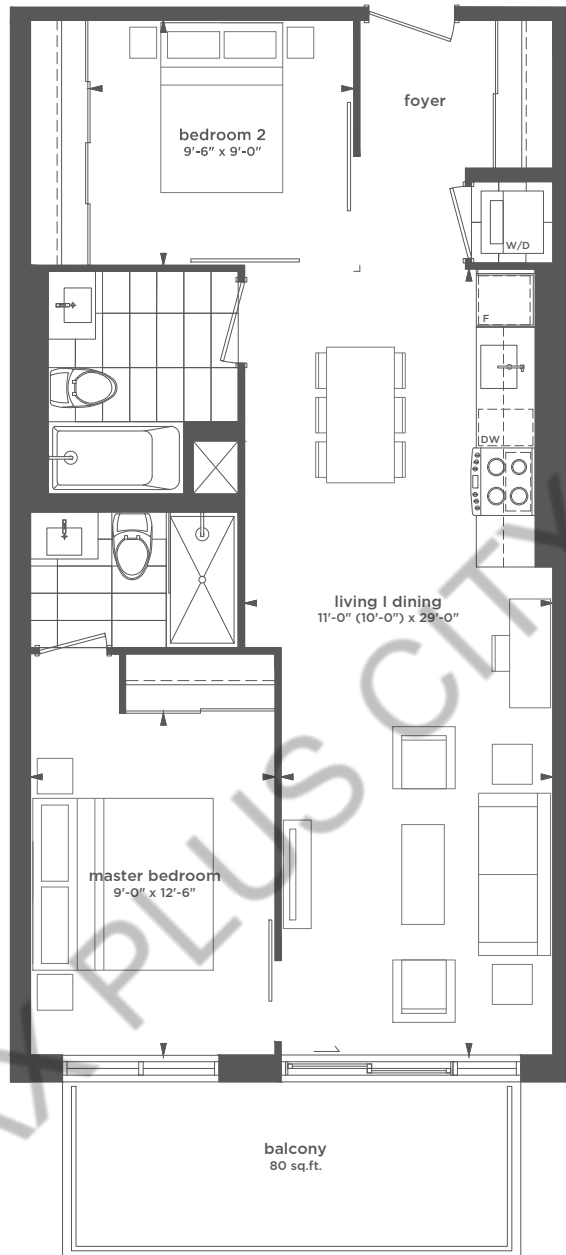
RE/MAX PLUS CITY TEAM



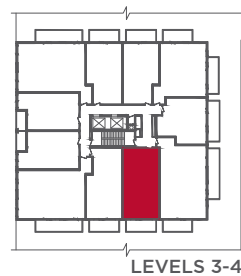
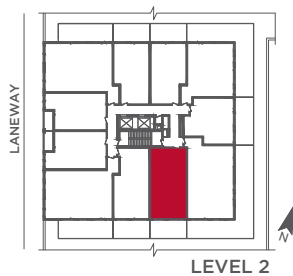
All sizes and specifications are subject to change without notice. E. & O. E.
 Note: Actual usable floor space may vary from the stated floor area.
 *Furniture and BBQ not included.
 *Terrace condition may require an interior step.



All sizes and specifications are subject to change without notice. E. & O. E.
 Note: Actual usable floor space may vary from the stated floor area.
 *Furniture and BBQ not included.
 *Terrace condition may require an interior step.

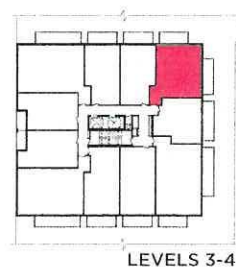
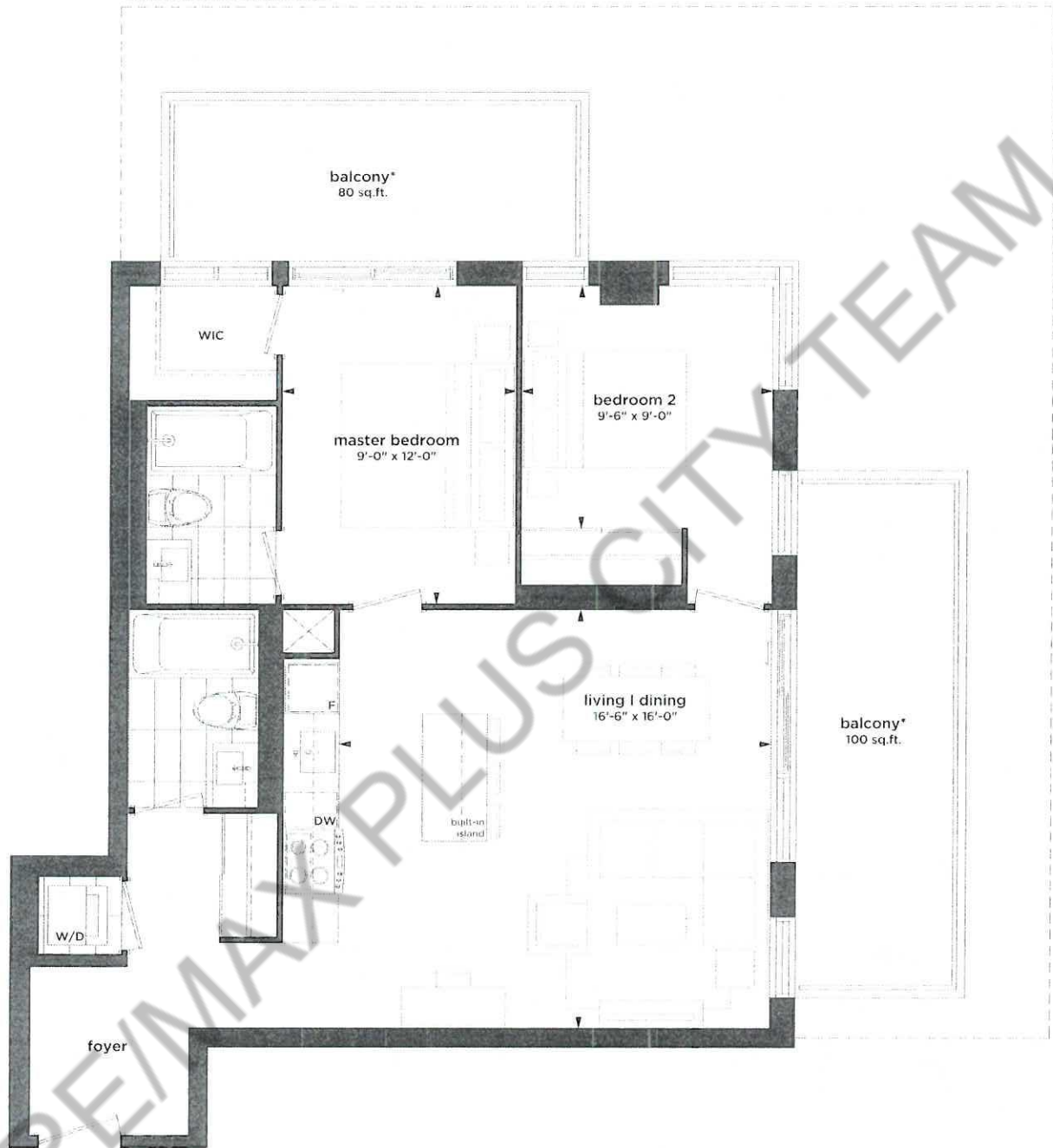


REMAINDER PLUS CITY TEAM

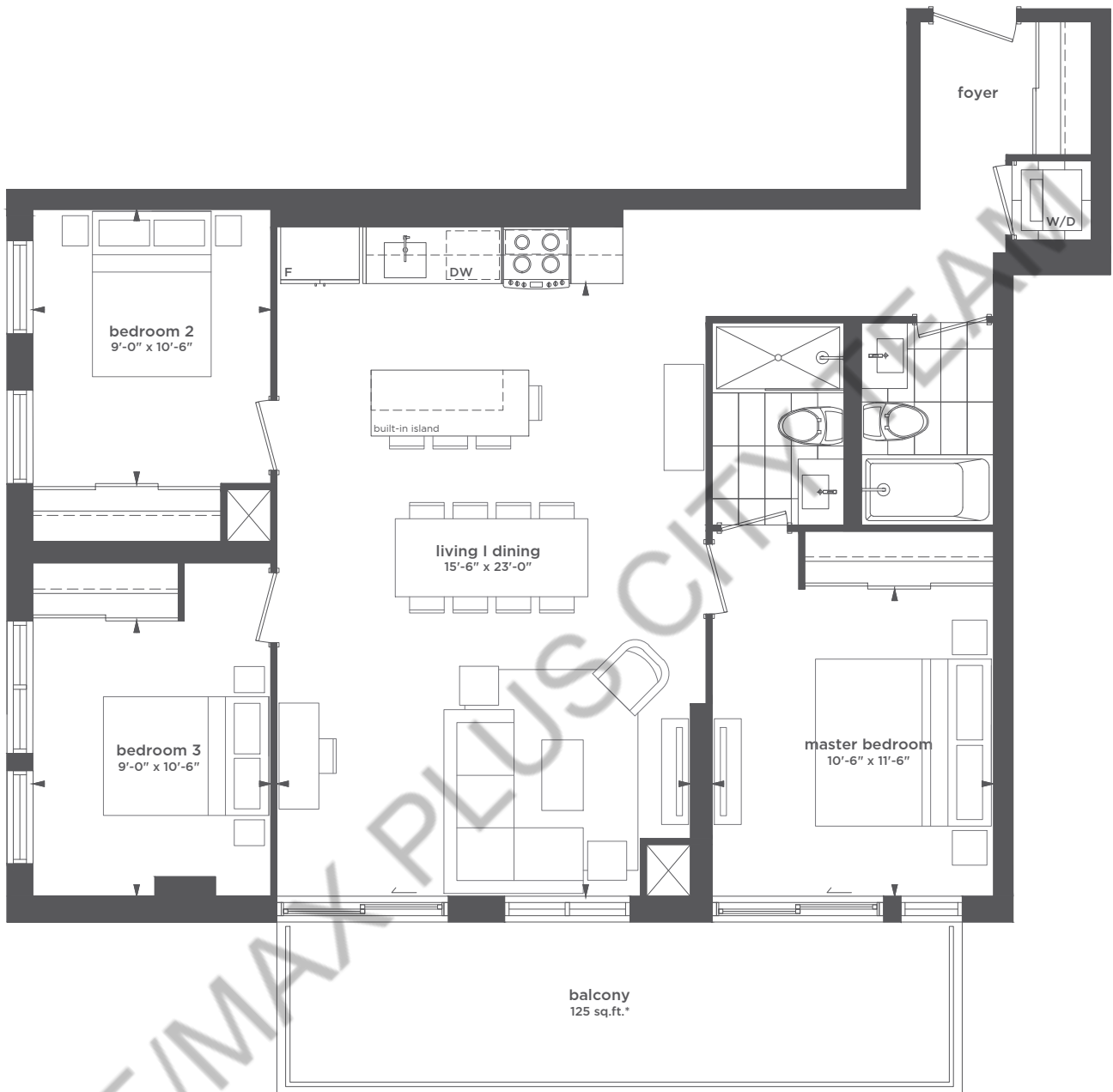


All sizes and specifications are subject to change without notice. E. & O. E.
 Note: Actual usable floor space may vary from the stated floor area.
 *Furniture and BBQ not included.
 *Terrace condition may require an interior step.

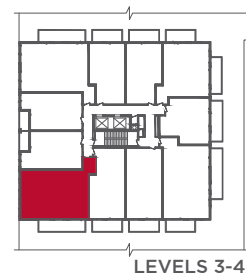
*2nd floor unit to have 600 sq ft. terrace



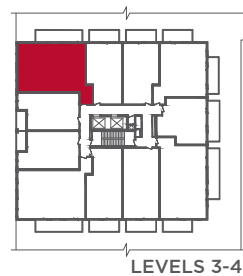
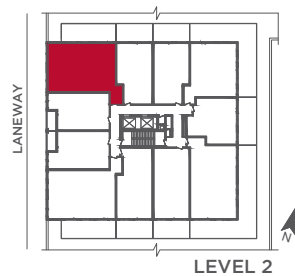
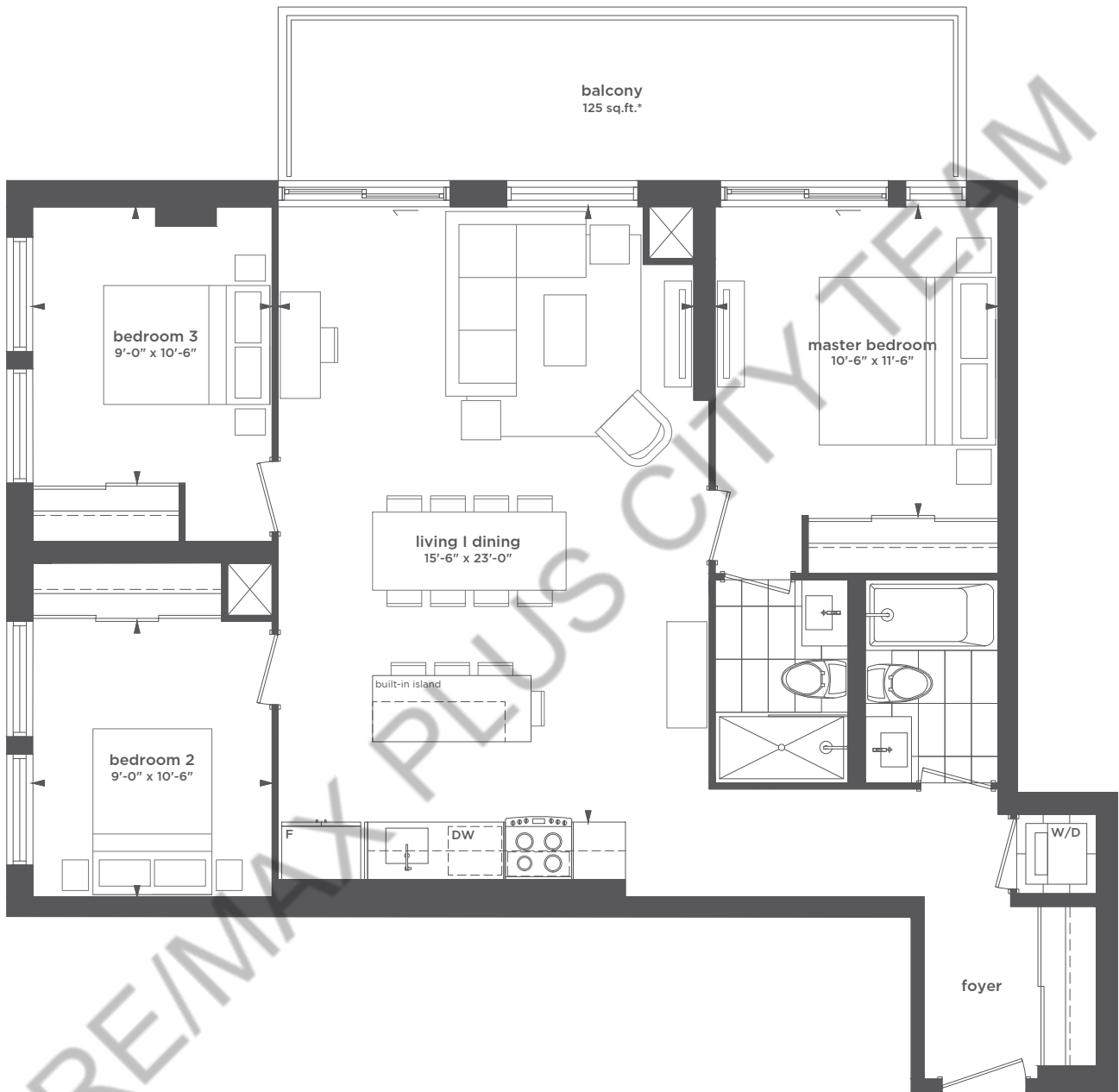
All sizes and specifications are subject to change without notice, E. & O. E.
 Note: Actual usable floor space may vary from the stated floor area.
 *Furniture not included.
 *Terrace condition may require an interior step.



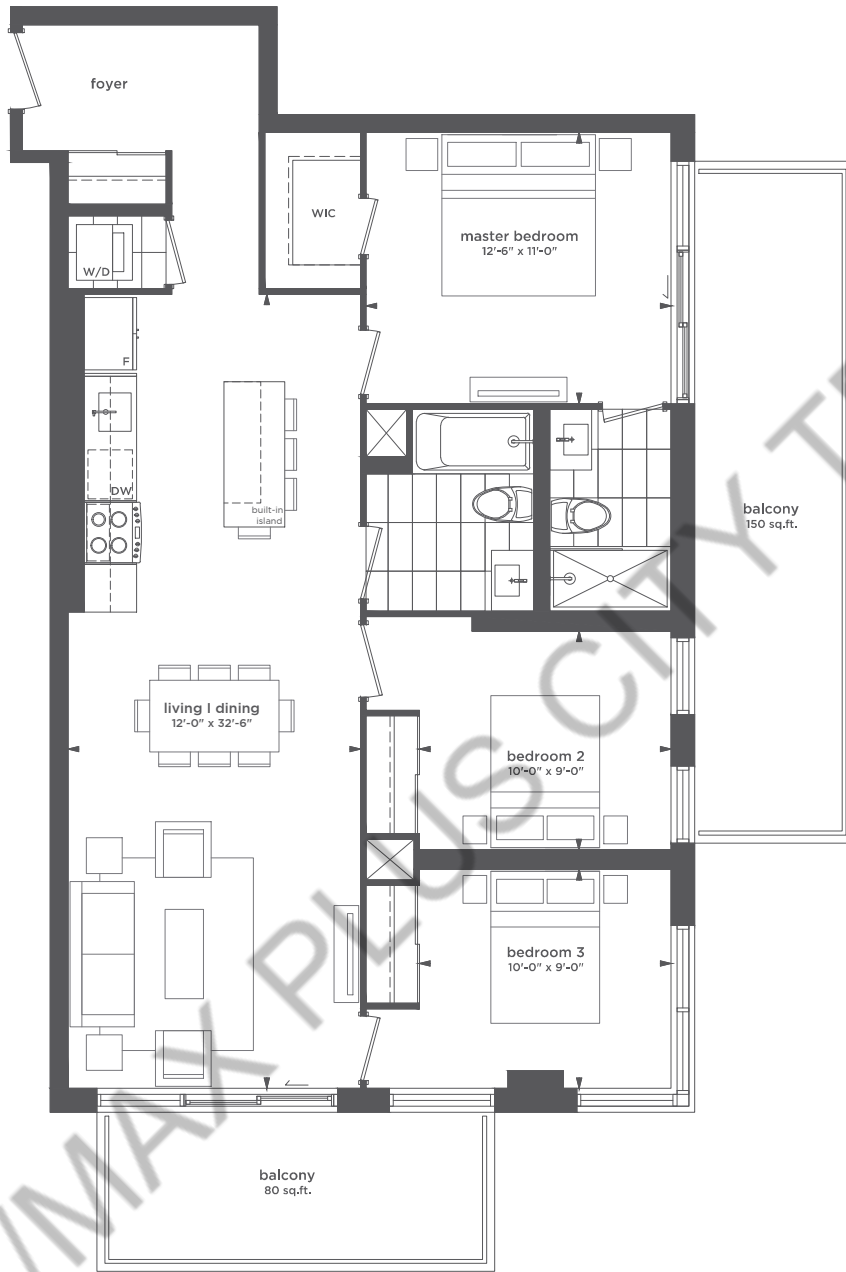
RE/MAX PLUS CITYTEAM



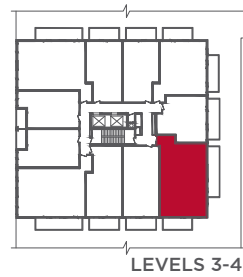
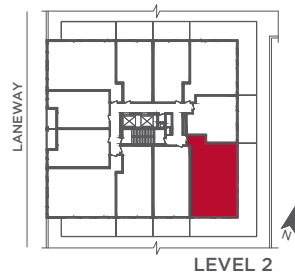
All sizes and specifications are subject to change without notice. E. & O. E.
 Note: Actual usable floor space may vary from the stated floor area.
 *Furniture and BBQ not included.
 *Terrace condition may require an interior step.



All sizes and specifications are subject to change without notice. E. & O. E.
 Note: Actual usable floor space may vary from the stated floor area.
 *Furniture and BBQ not included.
 *Terrace condition may require an interior step.



RE/MAX PLUS CITY TEAM



All sizes and specifications are subject to change without notice. E. & O. E.
 Note: Actual usable floor space may vary from the stated floor area.
 *Furniture and BBQ not included.
 *Terrace condition may require an interior step.